



Series 8XXX Elevator Socket w/Bifurcated Contacts

FEATURES

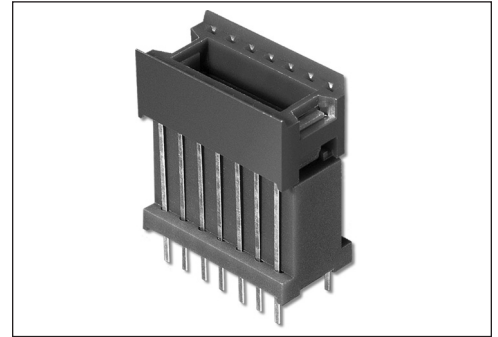
- Ideal for elevating devices (displays, switches, etc.) to desired level with 0.260 to 1.250 [6.60 to 31.75] height extension.

GENERAL SPECIFICATIONS

- STANDARD SOCKET BODY: black UL 94V-0 glass-filled 4/6 Nylon
- BIFURCATED CONTACTS: Grade A spring-tempered Phosphor Bronze per QQ-B-750
- CONTACT PLATING: “-10” 50-130 μ [1.27-3.30 μ] matte Sn per ASTM B545-97(2004)e1 over 50 μ [1.27 μ] Ni per SAE AMS-QQ-N-290B; “-10TL” 50-130 μ [1.27-3.30 μ] 90/10 Sn/Pb per MIL-T-10727 Type 1 over 50 μ [1.27 μ] Ni per SAE AMS-QQ-N-290B; “-11” 10 μ [0.25 μ] min. Au per MIL-G-45204 over 50 μ [1.27 μ] Ni per SAE AMS-QQ-N-290B. (consult factory for availability).
- CONTACT CURRENT RATING: 1 amp
- INSERTION FORCE: 110g/pin average
- WITHDRAWAL FORCE: 75g/pin average
- OPERATING TEMPERATURE: -67°F to 221°F [-55°C to 105°C] Sn and Sn/Pb plating; -67°F to 257°F [-55°C to 125°C] Au plating
- ACCEPTS: flat leads up to 0.014 thick x 0.020 wide [0.36-0.51], Round Leads up to 0.020 [0.51] dia.
- SOCKET ACCEPTS: lead lengths from seating plane 0.075-0.160 [1.91-4.06]

MOUNTING CONSIDERATIONS

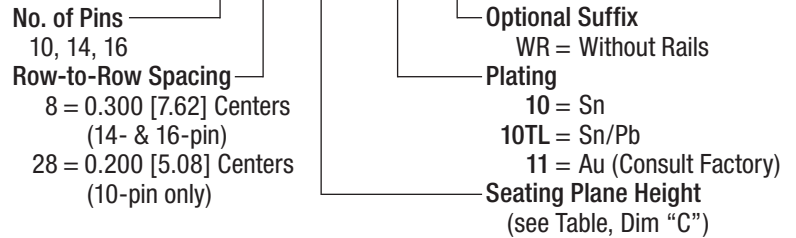
- SUGGESTED PCB HOLE SIZE: 0.035 \pm 0.002 [0.89 \pm 0.05] dia.



CUSTOMIZATION: In addition to the standard products shown on this page, Aries specializes in custom design and production. Special materials, platings, sizes, and configurations can be furnished, depending on the quantity. **NOTE:** Aries reserves the right to change product general specifications without notice.

ORDERING INFORMATION

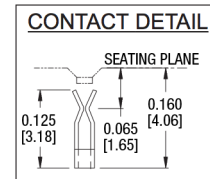
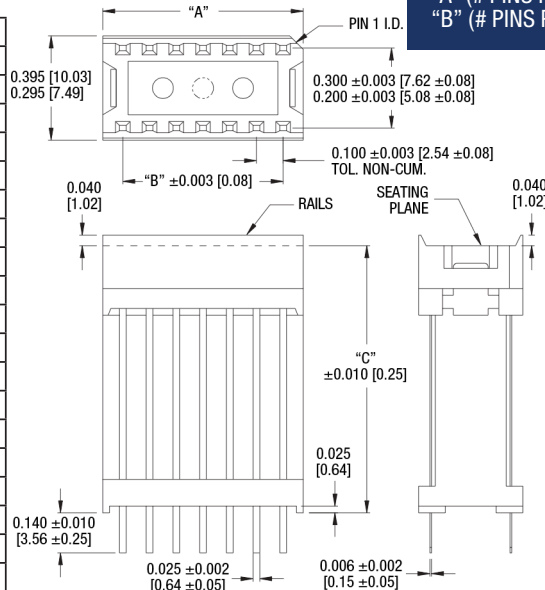
XX-X8 XXXX-1XXX XX



ELEVATOR SOCKETS WITH COLLET CONTACT AVAILABLE
 SEE DATA SHEET 13007 AND 13008

ALL DIMENSIONS IN INCHES [MILLIMETERS]
 CONSULT FACTORY FOR NON-STANDARD SIZES
 ALL TOLERANCES \pm 0.005 [\pm 0.13] UNLESS OTHERWISE SPECIFIED
 “A” (# PINS PER ROW x 0.100 [2.54]) +0.050 [1.27]
 “B” (# PINS PER ROW -1) x 0.100 [2.54]

Part No.	Dim. “C”
10-28440-10	0.440 [11.18]
14-8260-10	0.260 [6.60]
14-8350-10	0.350 [8.89]
14-8400-10	0.400 [10.16]
14-8435-10	0.440 [11.18]
14-8470-10	0.470 [11.94]
14-8510-10	0.510 [12.95]
14-8620-10	0.620 [15.75]
14-8770-10	0.770 [19.56]
14-8870-10	0.870 [22.10]
14-81000-10	1.000 [24.40]
14-81100-10	1.100 [27.94]
14-81187-10	1.180 [29.97]
14-81250-10	1.250 [31.75]
16-8430-10	0.430 [10.92]
16-8480-10	0.480 [12.19]
16-8700-10	0.700 [17.78]
16-8810-10	0.810 [20.57]
16-81250-10	1.250 [31.75]



Bristol, PA 19007-6810 USA
 TEL (215) 781-9956 • FAX (215) 781-9845
 WWW.ARIESELEC.COM • INFO@ARIESELEC.COM

