



Series 354000 DIP-to-SOIC Adapters

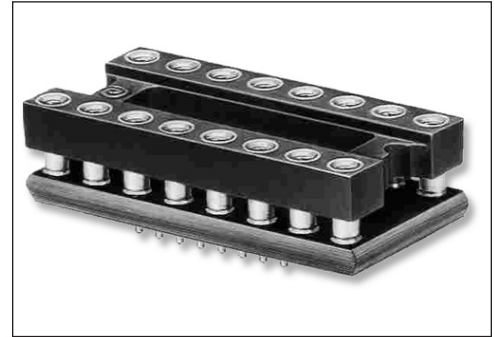
RoHS/WEEE-Compliant

FEATURES

- Convenient, cost-effective means of converting DIP style packaging to SOIC PC board layouts

SPECIFICATIONS

- Socket Body: black, UL 94V-0 glass-filled 4/6 Nylon 170°C continuous use temperature
- PCB: 0.062 thick FR406 or IS410 per IPC4101A/26 with 1-oz. Copper traces, both sides finished with ENIG (Immersion Gold over Electroless Nickel)
- Male Adaptor Pin: Brass Alloy 360 1/2-hard per UNS C36000 ASTM-B16-00
- Male Pin Plating: 10µ min. Gold per MIL-G-45204 over 100µ min, Nickel per SAE-AMS-QQ-N-290
- Female Contact Pin: Brass Alloy 360 1/2-hard per UNSC36000 ASTM-B16-00
- Female Pin Plating: 10µ [0.254] min. Gold per MIL-G-45204 over 100µ [2.54] min. Nickel per SAE-AMS-QQ-N-290
- 4-fingered Collet Contact: Beryllium-Copper per UNS C17200 ASTM B194-01
- Female Contact Plating: 10µ [0.254] min. Gold per MIL-G-45204 over 50µ [1.27] min. Nickel per SAE-AMS-QQ-N-290
- Contact Current Rating: 3 amps
- Operating Temperature: 221°F [105°C]
- Insertion Force: 180 grams/pin; Withdrawal Force: 90 grams/pin; Normal Force: 140 grams/pin; based on a 0.018 [0.46] diameter test lead
- Socket accepts leads 0.015-0.025 [0.38-0.64] in diameter, .0100-0.125 [2.54-3.18] long



NOTE: Aries specializes in custom design and production. In addition to the standard products shown on this page, special materials, platings, sizes, and configurations can be furnished, depending on quantities. Aries reserves the right to change product specifications without notice.

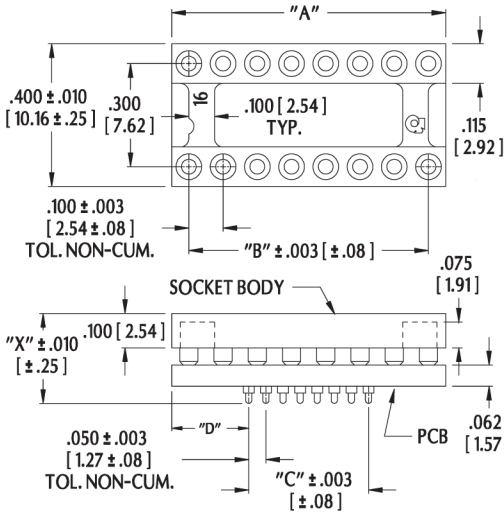
MOUNTING CONSIDERATIONS

- Suggested PCB Solder Pad Size: 0.028 [0.71] minimum width

"A" = NO. OF PINS PER ROW x 0.100 [2.54]

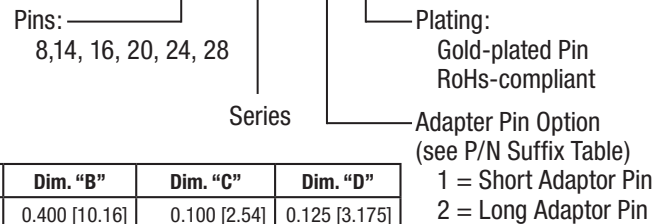
"D" = (NO. OF PINS PER ROW -1) x 0.100 [2.54]

All tolerances ±0.005 [0.13] unless otherwise specified

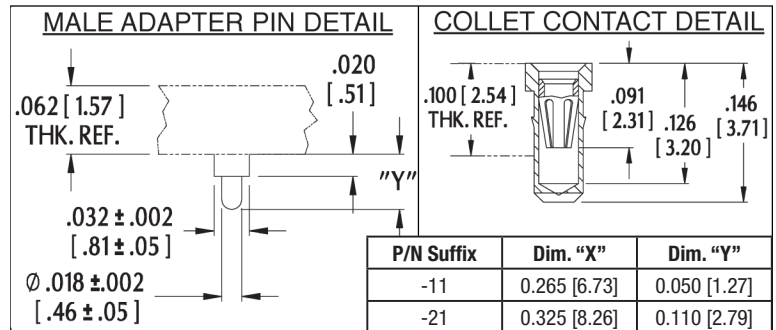


ORDERING INFORMATION

XX-354000-X1-RC



No. of Pins	Dim. "A"	Dim. "B"	Dim. "C"	Dim. "D"
8	0.400 [10.16]	0.400 [10.16]	0.100 [2.54]	0.125 [3.175]
14	0.700 [17.78]	0.600 [15.24]	0.300 [7.62]	0.225 [5.72]
16	0.800 [20.32]	0.700 [17.78]	0.350 [8.89]	0.225 [5.72]
20	1.000 [25.40]	0.900 [22.86]	0.450 [11.43]	0.275 [6.99]
24	1.200 [30.48]	1.100 [27.94]	0.550 [13.97]	0.325 [8.26]
28	1.400 [35.56]	1.300 [33.02]	0.650 [16.51]	0.375 [9.53]



ALL DIMENSIONS: INCHES [MILLIMETERS]



Bristol, PA 19007-6810 USA
 TEL (215) 781-9956 • FAX (215) 781-9845
 WWW.ARIESELEC.COM • INFO@ARIESELEC.COM



18009RC
 Rev. C