



SOIC to TO Adapter RoHs Compliant

FEATURES:

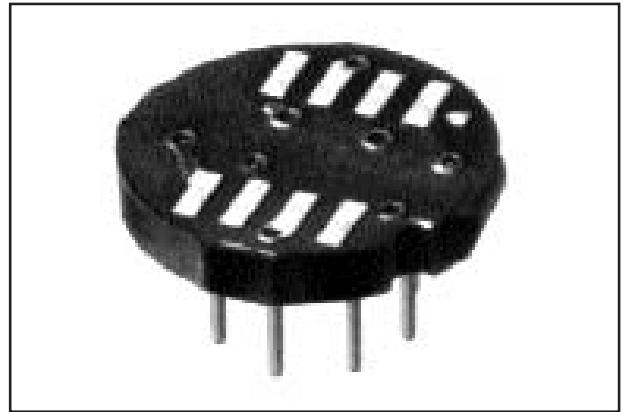
- Lead Free RoHs/WEEE Compliant
- 8-position SOIC footprint on the top and a circular, 8-pin TO can male pin footprint on the bottom. ICs now available only in 8-position SOIC packages can be readily mounted on boards having TO thru-hole footprints without having to redesign the board.
- Consult factory for mounting of consigned chips.

SPECIFICATIONS:

- Adapter board is .062 thick FR406 or IS410 per IPC4101A/26 with 1 ounce Copper traces both sides.
- Male pin is Brass Alloy 360 1/2 hard per UNS C36000 ASTM-B16-00.
- Male pin plating is 10µ" Min. Gold per MIL-G-45204 over 100µ" Min. Nickel per SAE-AMS-QQ-N-290.
- Operating temperature=221°F [105°C].

MOUNTING CONSIDERATIONS:

- Suggested PCB hole size=.028 ± .003 [.71±.08] dia.



Note: Aries specializes in custom design and production. In addition to the standard products shown on this page, special materials, platings, sizes, and configurations can be furnished, depending on quantities. Aries reserves the right to change product specifications without notice.

ORDERING INFORMATION

ALL DIMENSIONS: INCHES [MILLIMETERS]

All tolerances ± .005 [.13] unless otherwise specified

DIP to TO adapter also available. Consult Data Sheet No. 18012.

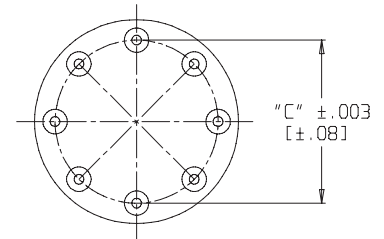
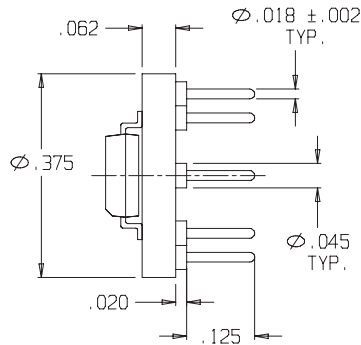
Part Number	Dim. "C"
1109814-RC	.200 [5.08]

3 SPCS. @ .050 ± .003
= .150 ± .003
2 PLCS.

CTR. TO CTR.
OF PADS = .225

PADS ARE
.022 X .075

CUSTOMER SUPPLIED
8 LEAD SOIC
[MOUNTING OPTION SHOWN]



<http://www.arieselec.com> • info@arieselec.com

Bristol, PA USA
TEL: (215) 781-9956
FAX: (215) 781-9845



18013RC
REV. B