



16-304633-18

20 PIN PLCC TO 16 PIN DIP ADAPTER FOR MOTOROLA MC12009 AND OTHERS

FEATURES:

- A cost effective means of upgrading to PLCC Package without changing your PCB layout.

SPECIFICATIONS:

- Board Material is .062 thick FR-4 with 1 oz. Copper traces, both sides.
- Pins are Brass Alloy 360 1/2 hard per UNS C36000 ASTM-B-16-00.
- Pin plating is 200 μ [5.08μm] min. Tin per ASTM B 545 Type 1 or Tin/Lead 93/7 ASTM B 545 over 100 μ [2.54μm] Nickel per SAE-AMS-QQ-N-290.
- Operating temperature = 221°F [105°C]

MOUNTING CONSIDERATIONS:

- Suggested PCB hole size = .28 ± .003



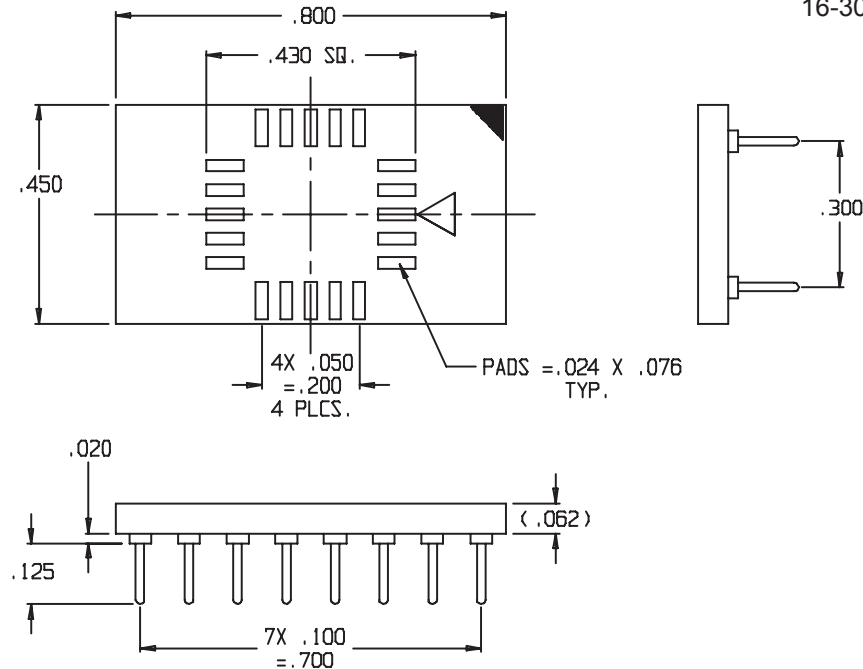
Note: Aries specializes in custom design and production. In addition to the standard products shown on this page, special materials, platings, sizes, and configurations can be furnished, depending on quantities. Aries reserves the right to change product specifications without notice.

ALL DIMENSIONS: INCHES [MILLIMETERS]

All tolerances ± .005 [.13] unless otherwise specified

ORDERING INFORMATION

16-304633-18



PINOUT LIST

PLCC	1	2	3	4	5	6	7	8	9	10	11	12	13	14	15	16	17	18	19	20
	NC					NC					NC					NC				
DIP		1	2	3	4		5	6	7	8		9	10	11	12		13	14	15	16



Bristol, PA USA
TEL: (215) 781-9956
FAX: (215) 781-9845



18070
REV. E