



# 1111903

## 24Pin SOWIC IC to 22Pin .4 CTR DIP Adapter for 75ALS162 and other IC's

**FEATURES:**

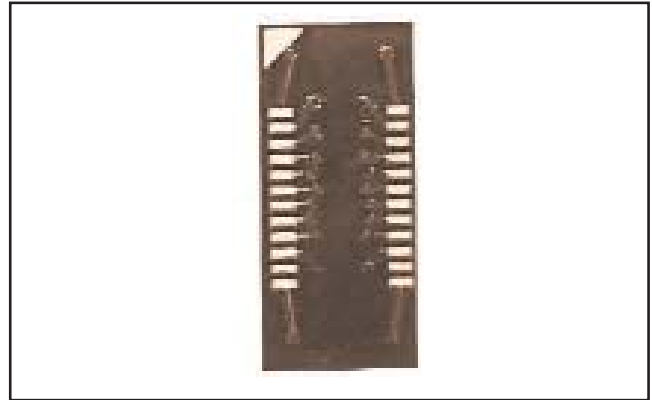
- A cost effective means of upgrading to SOIC without changing your PCB layout.

**SPECIFICATIONS:**

- Board Material is .062 thick FR-4 with 1 oz. Copper traces, both sides. RoHS Compliant Board is FR406 or IS 410 per IPC4101A/46.
- Pins are Brass Alloy 360 1/2 hard per UNS C36000 ASTM-B-16-00.
- Pin plating is 200µ [5.08µm] min. Tin per ASTM B 545 Type 1 or Tin/Lead 93/7 per ASTM B 545 over 100µ [2.54µm] Nickel per SAE-AMS-QQ-N-290. The RoHS Version Pin is 10µ min. Gold per MIL-G-45204 over over 100µ Nickel per SAE-AMS-QQ-N-290.
- Operating temperature = 221°F [105°C]

**MOUNTING CONSIDERATIONS:**

- Suggested PCb hole size = .028 ± .003 [.71± .08] diameter.



*Note: Aries specializes in custom design and production. In addition to the standard products shown on this page, special materials, platings, sizes, and configurations can be furnished, depending on quantities. Aries reserves the right to change product specifications without notice.*

**ORDERING INFORMATION**

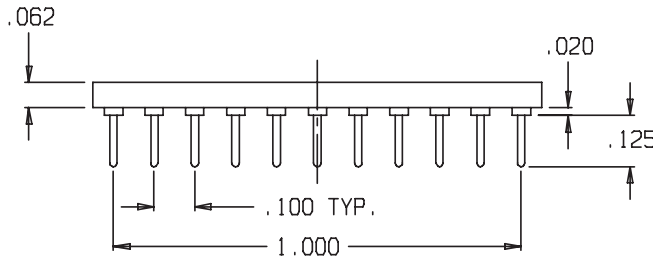
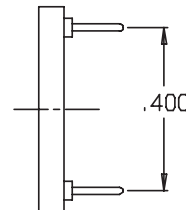
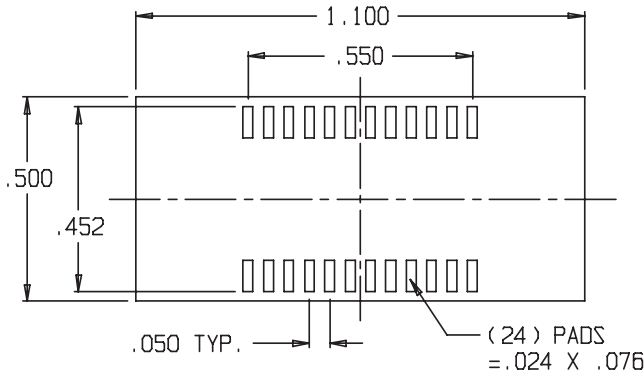
1111903

1111903-RC

(RoHS Complaint Version)

**ALL DIMENSIONS: INCHES [MILLIMETERS]**

All tolerances ± .005 [.13] unless otherwise specified



PIN #'S	
SOIC	DIP
1	1
2	2
3	3
4	4
5	5
6	6
7	7
8	8
9	9
10	10
11	NC
12	11
13	12
14	NC
15	13
16	14
17	15
18	16
19	17
20	18
21	19
22	20
23	21
24	22



Frenchtown, NJ USA  
 TEL: (908) 996-6841  
 FAX: (908) 996-3891



18071  
 REV. D