



# 22-304504-18

## 24Pin SOIC w/ Package to 22 Pin .4 DIP

### FEATURES:

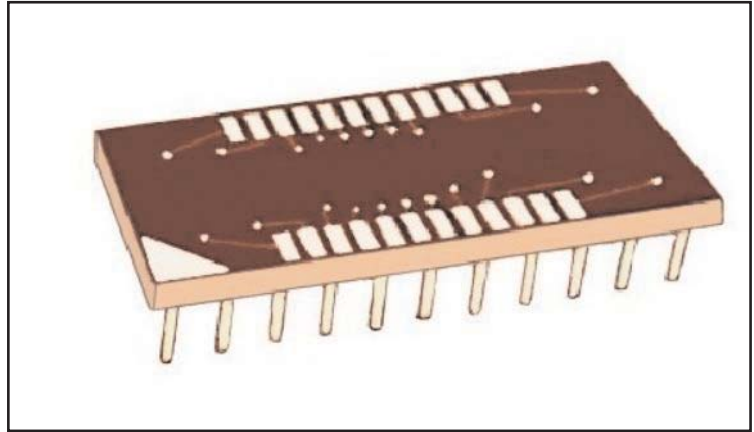
- A cost effective means of upgrading to SOIC without changing your PCB layout.

### SPECIFICATIONS:

- Board Material is .062 thick FR-4 with 1 oz. Copper traces, both sides.
- Pins are Brass Alloy 360 1/2 hard per UNS C36000 ASTM-B-16-00.
- Pin plating is 200 $\mu$  [5.08 $\mu$ m] min. Tin per ASTM B 545 Type 1 or Tin/Lead 93/7 per ASTM B 545 over 100 $\mu$  [2.54 $\mu$ m] Nickel per SAE-AMS-QQ-N-290.
- Operating temperature = 221°F [105°C]

### MOUNTING CONSIDERATIONS:

- Suggested PCB Hole size = .028  $\pm$  .003 [.71 $\pm$ .08]. dia.

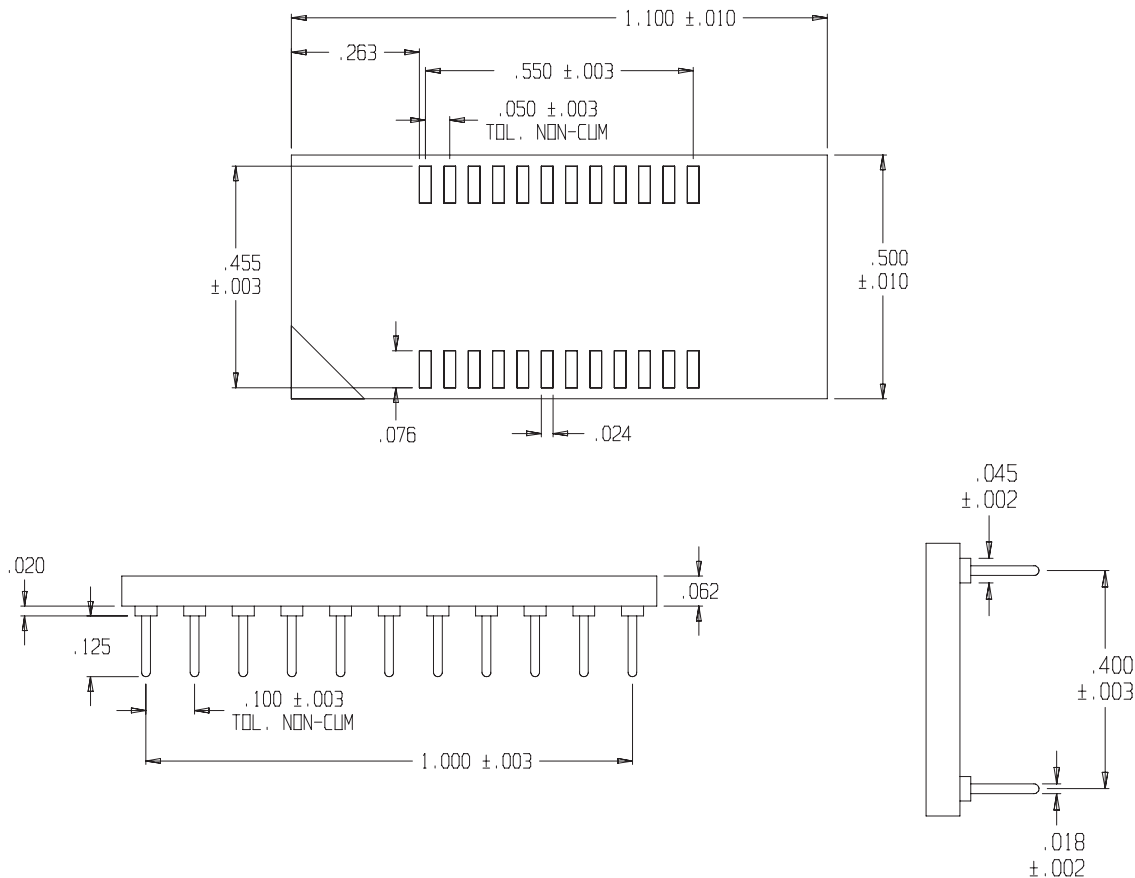


*Note: Aries specializes in custom design and production. In addition to the standard products shown on this page, special materials, platings, sizes, and configurations can be furnished, depending on quantities. Aries reserves the right to change product specifications without notice.*

### ALL DIMENSIONS: INCHES [MILLIMETERS]

All tolerances  $\pm$  .005 [.13] unless otherwise specified

### PINS 11 & 14 NOT CONNECTED ON SOIC



<http://www.arieselec.com> • [info@arieselec.com](mailto:info@arieselec.com)

Frenchtown, NJ USA  
 TEL: (908) 996-6841  
 FAX: (908) 996-3891



18080  
 REV.C