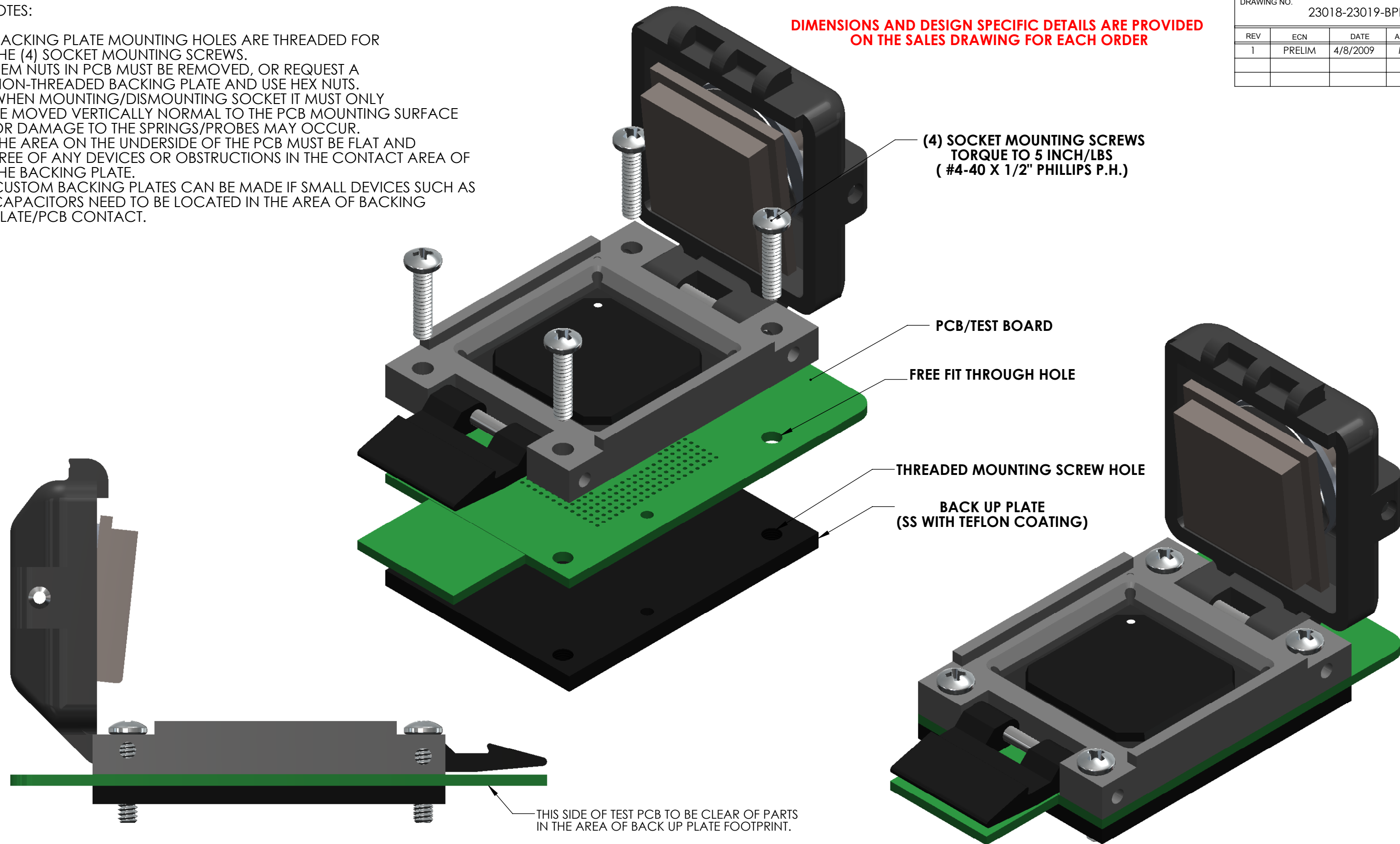


NOTES:

- BACKING PLATE MOUNTING HOLES ARE THREADED FOR THE (4) SOCKET MOUNTING SCREWS.
- PEM NUTS IN PCB MUST BE REMOVED, OR REQUEST A NON-THREADED BACKING PLATE AND USE HEX NUTS.
- WHEN MOUNTING/DISMOUNTING SOCKET IT MUST ONLY BE MOVED VERTICALLY NORMAL TO THE PCB MOUNTING SURFACE OR DAMAGE TO THE SPRINGS/PROBES MAY OCCUR.
- THE AREA ON THE UNDERSIDE OF THE PCB MUST BE FLAT AND FREE OF ANY DEVICES OR OBSTRUCTIONS IN THE CONTACT AREA OF THE BACKING PLATE.
- CUSTOM BACKING PLATES CAN BE MADE IF SMALL DEVICES SUCH AS CAPACITORS NEED TO BE LOCATED IN THE AREA OF BACKING PLATE/PCB CONTACT.

DIMENSIONS AND DESIGN SPECIFIC DETAILS ARE PROVIDED ON THE SALES DRAWING FOR EACH ORDER

DRAWING NO. 23018-23019-BPI			
REV	ECN	DATE	APPVD
1	PRELIM	4/8/2009	MJS



- SOCKET AND DEVICE SHOWN ARE FOR INSTRUCTIONAL PURPOSES AND DO NOT REPRESENT ANY SPECIFIC SOCKET ORDER OR DESIGN.
 - REFER TO SALES DRAWING OR DATA SHEET FOR ANY SOCKET SPECIFIC DETAILS.

INCH [MM] OR INCH [MM]	TOLERANCES UNLESS OTHERWISE SPECIFIED	MATL: SEE NOTES
<p>THIRD ANGLE PROJECTION</p>	0.0 ±.010 [0.25]	USED ON: 23018-24009
	0.00 ±.005 [0.13]	DES: DRW: BG 4/8/2009
	0.000 ±.002 [0.08]	CKD: APP:
	ANGLES ± 1°	TOOL NO.:

ARIES
 ELECTRONICS, INC.
 BRISTOL, PA 19007

SCALE: 2:1	TITLE: BACK UP PLATE INSTALL 23018/24009 CSP SOCKET	
SHEET OF 1	SIZE B	DRAWING NO. 23018-23019-BPI
		REV 1