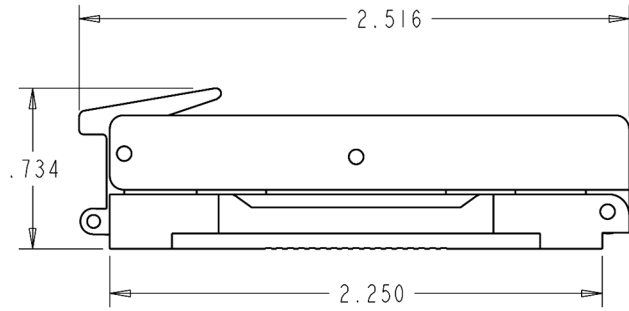
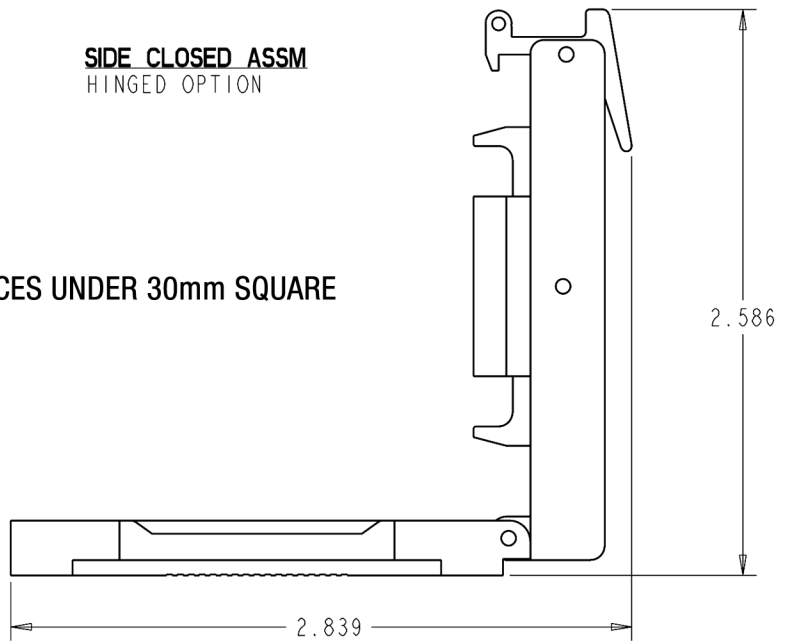


**FRONT CLOSED ASSM**  
DOUBLE LATCH OPTION



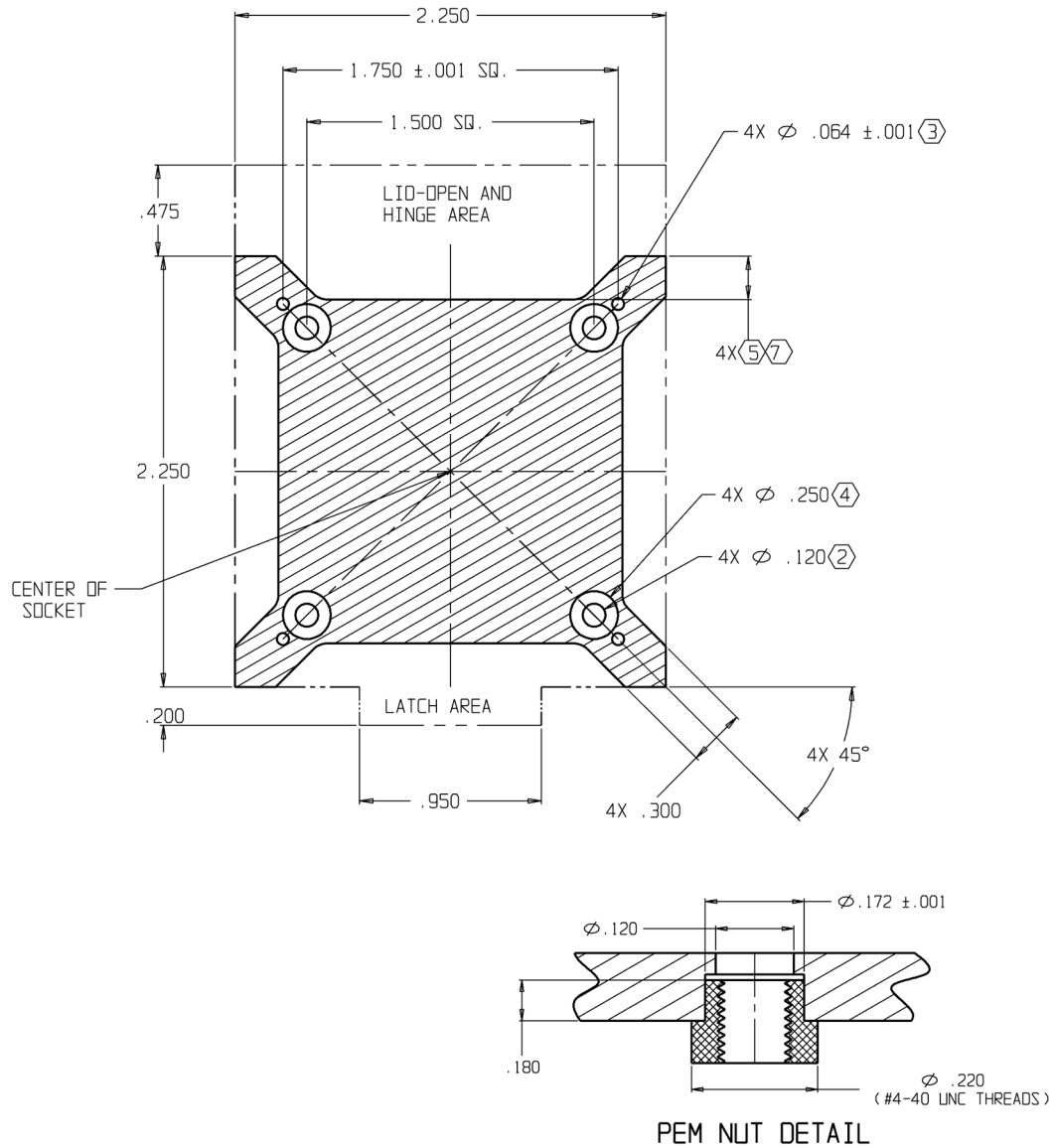
**SIDE CLOSED ASSM**  
HINGED OPTION

**HIGH-PERFORMANCE RF TEST SOCKET FOR DEVICES UNDER 30mm SQUARE**



**SIDE OPEN ASSM**  
HINGED OPTION

**LARGE TEST SOCKET LOAD BOARD FOOTPRINT  
(TOP VIEW FROM SOCKET SIDE)**



**NOTES:**

1. NO SOLDER MASK OR LEGEND WITHIN .060 OF HATCHED AREA.
2. PEM NUTS OR BACKING PLATE WITH #4-40 UNC THREADS SUGGESTED FOR SOCKET MOUNTING.
3. HOLES FOR SOCKET ALIGNMENT PINS.
4. PLATED PAD FOR TEST SOCKET MOUNTING.
5. AREA FOR DECOUPLING/COMPONENTS .065 MAX HIEGHT.
6. CONTROLLING DIMENSIONS IN INCHES EXCEPT WHERE NOTED BY "mm" SUFFIX.
7. DIM DEPENDANT ON PACKAGE SIZE (APPROX. RANGE: .050" TO .350")

**FOOTPRINT FITS DEVICES WITH BODY SIZES FROM 14mm to 30mm SQUARE**