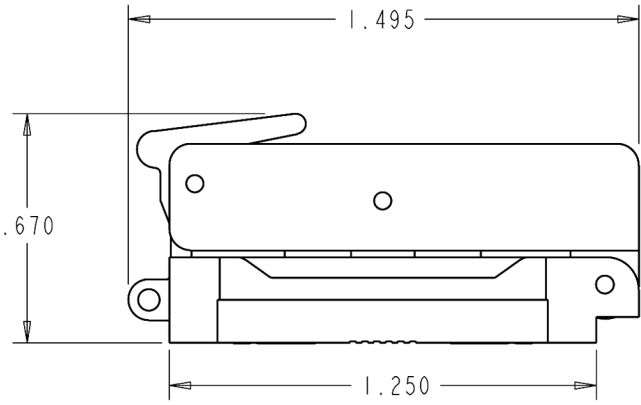
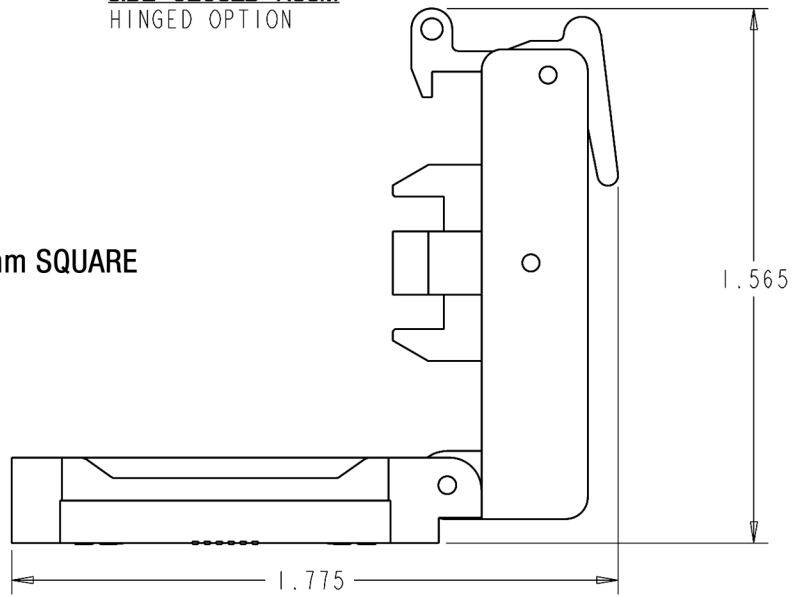


**FRONT CLOSED ASSM**  
 DOUBLE LATCH OPTION  
 (DETACHABLE LID)



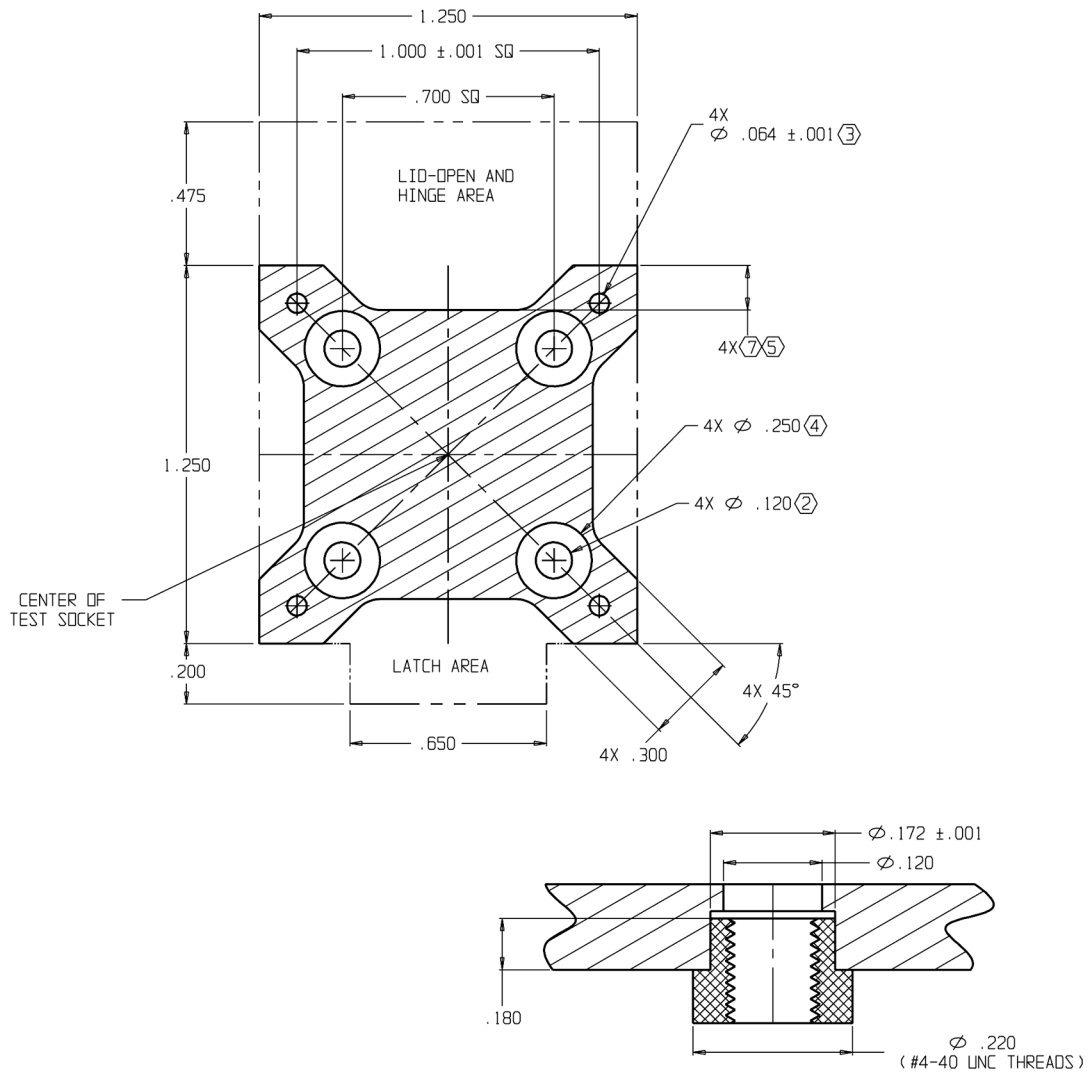
**SIDE CLOSED ASSM**  
 HINGED OPTION

FITS ALL DEVICES UNDER 10mm SQUARE



**SIDE OPEN ASSM**  
 HINGED OPTION

**SMALL TEST SOCKET LOAD BOARD FOOTPRINT  
(TOP VIEW FROM SOCKET SIDE)**



**PEM NUT DETAIL**

- NOTES:
1. NO SOLDER MASK OR LEGEND WITHIN .060 OF HATCHED AREA.
  - ② PEM NUTS OR BACKING PLATE WITH #4-40 UNC THREADS SUGGESTED FOR SOCKET MOUNTING.
  - ③ HOLES FOR SOCKET ALIGNMENT PINS.
  - ④ PLATED PAD FOR TEST SOCKET MOUNTING.
  - ⑤ AREA FOR DECOUPLING/COMPONENTS .065 MAX HIEGHT.
  6. CONTROLLING DIMENSIONS IN INCHES EXCEPT WHERE NOTED BY "mm" SUFFIX.
  - ⑦ DIM DEPENDANT ON PACKAGE SIZE (APPROX. RANGE: .050" TO .350")

**FOOTPRINT FITS DEVICES WITH BODY SIZES LESS THAN 10mm SQUARE**