



# P/N 16-304633-18 20-Pin PLCC-to-16-Pin DIP Adapter for Motorola MC12009 and Others

## FEATURES

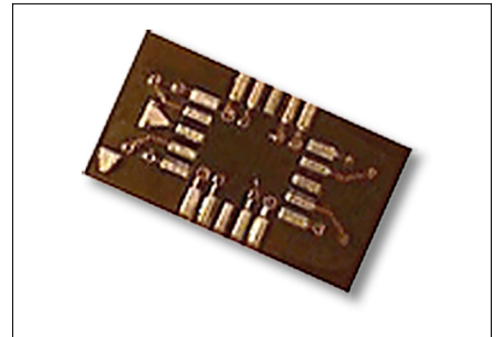
- A cost-effective means of upgrading to PLCC package without changing your PCB layout.

## GENERAL SPECIFICATIONS

- BOARD MATERIAL: 0.062 thick FR-4 with 1-oz. Cu traces, both sides
- PINS: Brass 360 1/2-hard per UNS C36000, ASTM B16/B16M
- PIN PLATING: 200 $\mu$  [5.08 $\mu$ ] Sn/Pb 93/7 ASTM B579-73 over 100 $\mu$  [2.54 $\mu$ ] Ni per SAE AMS-QQ-N-290
- OPERATING TEMPERATURE: 221°F [105°C]

## MOUNTING CONSIDERATIONS

- SUGGESTED PCB HOLE SIZE: 0.28  $\pm$  0.003 dia.



**CUSTOMIZATION:** In addition to the standard products shown on this page, Aries specializes in custom design and production. Special materials, platings, sizes, and configurations can be furnished, depending on the quantity. **NOTE:** Aries reserves the right to change product general specifications without notice.

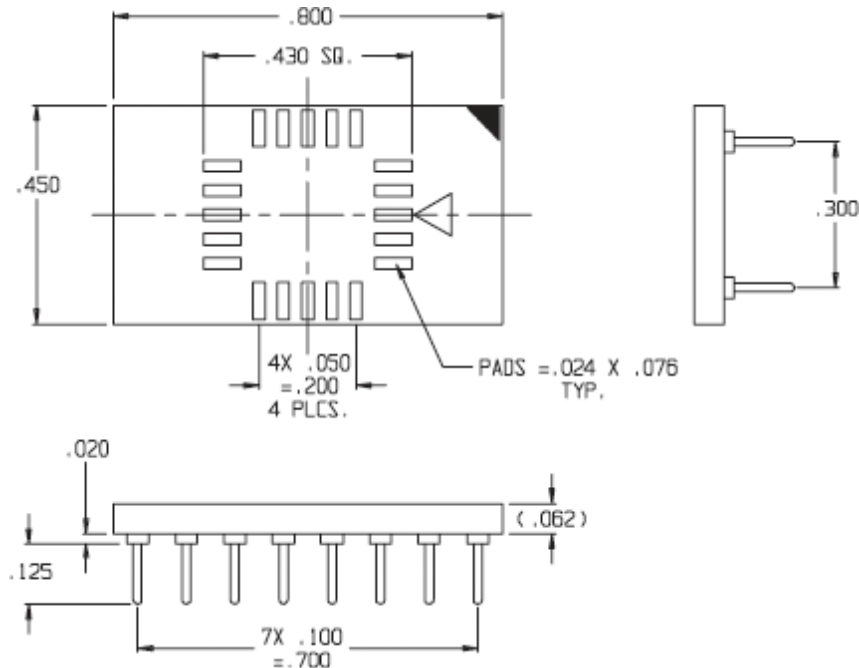
## ORDERING INFORMATION

16-304633-18

16-304633-18-P for Panelized Version

ALL DIMENSIONS: INCHES [MILLIMETERS]

ALL TOLERANCES:  $\pm$ 0.005 [0.13] UNLESS OTHERWISE SPECIFIED



| Pinout List |    |   |   |   |   |    |   |   |   |    |    |    |    |    |    |    |    |    |    |    |
|-------------|----|---|---|---|---|----|---|---|---|----|----|----|----|----|----|----|----|----|----|----|
| PLCC        | 1  | 2 | 3 | 4 | 5 | 6  | 7 | 8 | 9 | 10 | 11 | 12 | 13 | 14 | 15 | 16 | 17 | 18 | 19 | 20 |
|             | NC |   |   |   |   | NC |   |   |   |    | NC |    |    |    |    | NC |    |    |    |    |
| DIP         |    | 1 | 2 | 3 | 4 |    | 5 | 6 | 7 | 8  |    | 9  | 10 | 11 | 12 |    | 13 | 14 | 15 | 16 |



**ARIES**  
ELECTRONICS, INC.

Bristol, PA 19007-6810 USA  
 TEL (215) 781-9956 • FAX (215) 781-9845  
 WWW.ARIESELEC.COM • INFO@ARIESELEC.COM

PRINTOUTS OF THIS DOCUMENT MAY BE OUT OF DATE AND SHOULD BE CONSIDERED UNCONTROLLED

18070  
Rev. AA